

This is a section from *An Introduction to Sri Lankan Sign Language* (2007).

For more information, please go to
www.rohanaspecialschool.org.

වේලාව සහ දිනය

Time and Date

අඟහරුවාදා

අද

අවුරුදු

අවුරුද්ද

අගෝස්තු

අප්‍රේල්

ඉරිදා

ඊයේ

ඔක්තෝම්බර්

ජනවාරි

ජූනි

ජූලි

දවස

දෙසැම්බර්

නිවාඩු

නොවැම්බර්

පෙබරවාරි

පෝය

බදාදා

බාගය (හමාර)

බ්‍රහස්පතින්දා

මාර්තු

මාසය

මැයි

වෙසක්

සතිය

සඳුදා

සිකුරාදා

සෙනසුරාදා

සෙප්තැම්බර්

හැමදාම

හෙට

April

August

Day

December

Every Day

February

Friday

Half-Past

Holiday

January

July

June

March

May

Monday

Month

November

O'Clock

October

Poya

Saturday

September

Sinhala & Tamil New Year

Sunday

Thursday

Today

Tomorrow

Tuesday

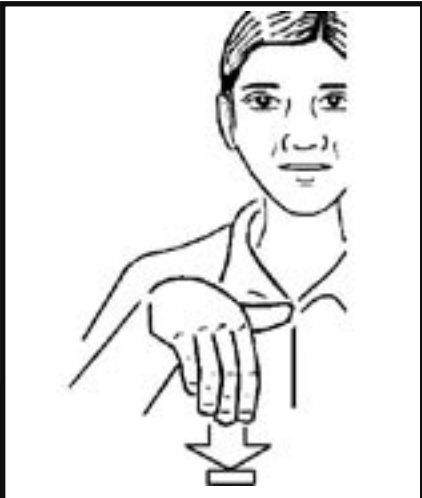
Wednesday

Week

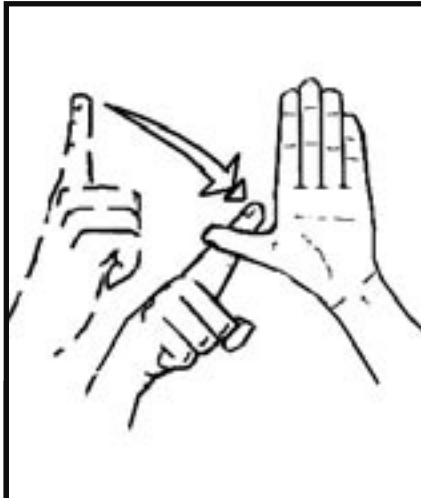
Wesak

Year

Yesterday



අද
Today



හැමදාම
Every Day



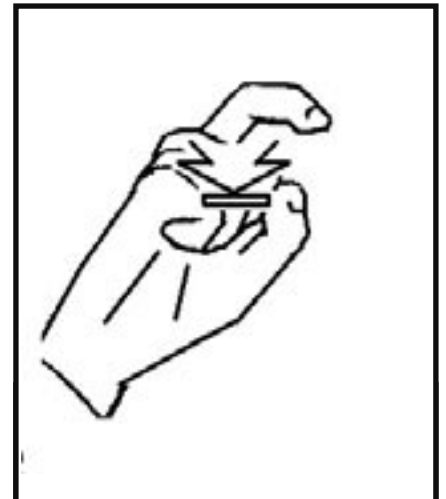
හෙට
Tomorrow



ඊයේ
Yesterday



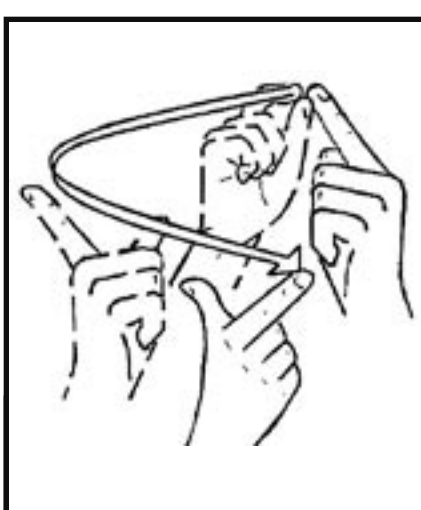
00
O'Clock (:00)



බාගය (හමාර)
Half-Past (:30)



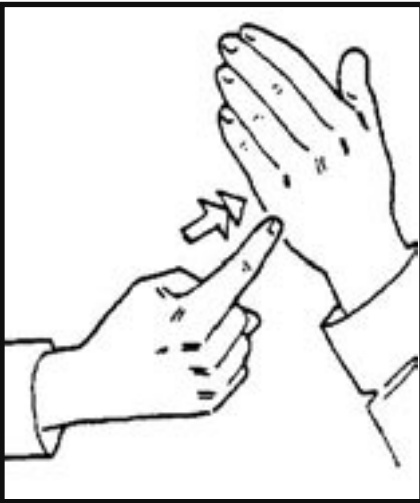
හිවාඩු
Holiday



පෝය
Poya



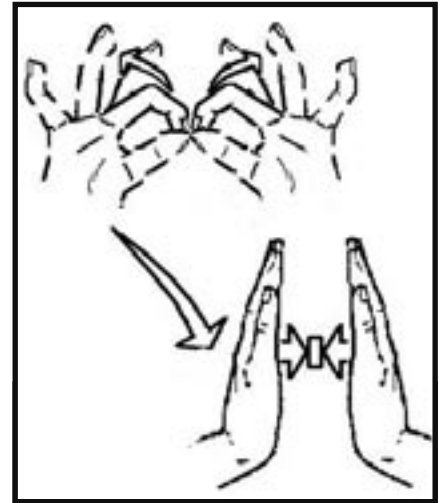
සඳුදා
Monday



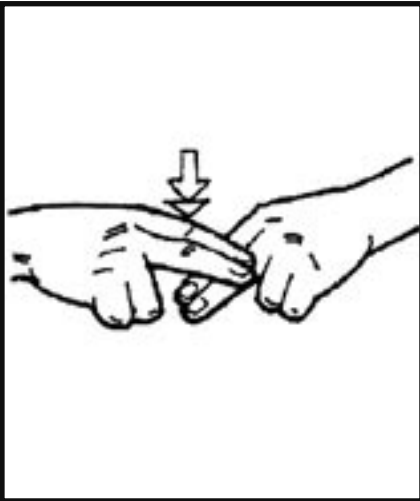
අඟහරුවාදා
Tuesday



බදාදා
Wednesday



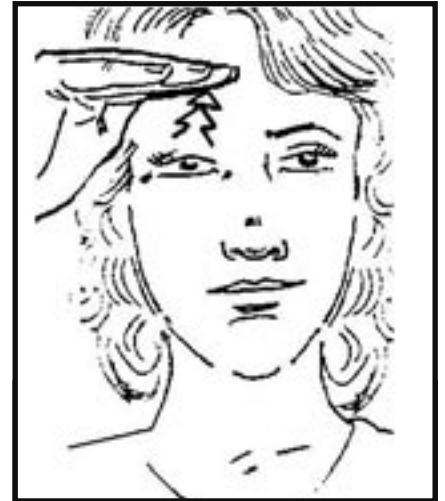
බ්‍රහස්පතින්දා
Thursday



සිකුරාදා
Friday



සෙනසුරාදා
Saturday



ඉරිදා
Sunday



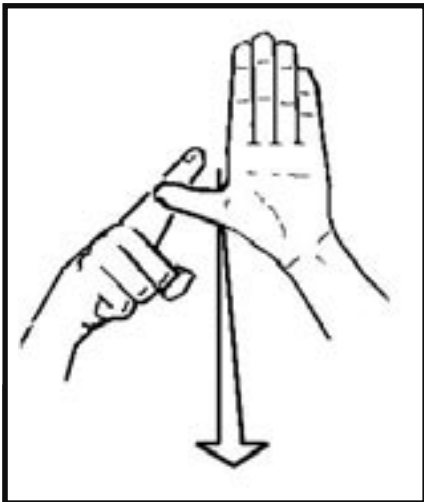
දවස
Day



සතිය
Week



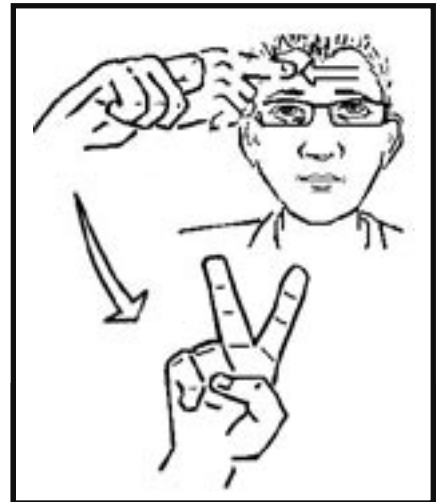
මාසය
Month



අවුරුද්ද
Year



ජනවාරි
January



පෙබරවාරි
February



මාර්තු
March



අප්‍රේල්
April



මැයි
May



ජූනි
June



ජූලි
July



අගෝස්තු
August



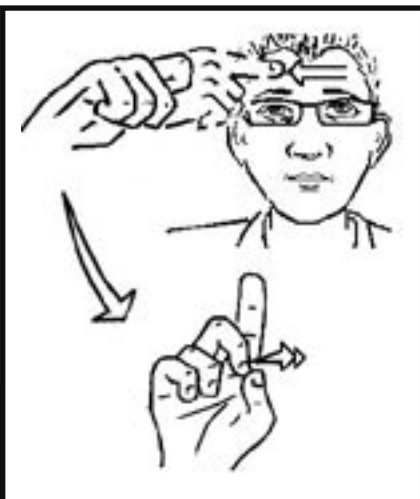
සෙප්තැම්බර්
September



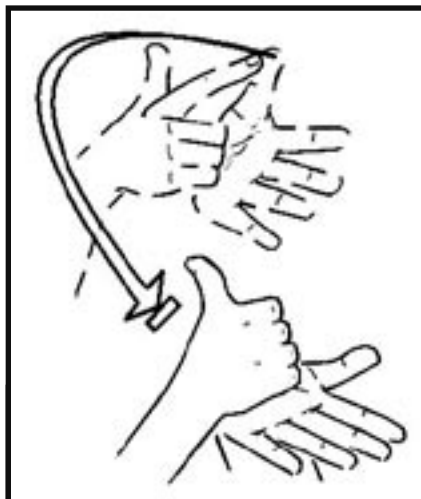
ඔක්තෝම්බර්
October



නොවැම්බර්
November



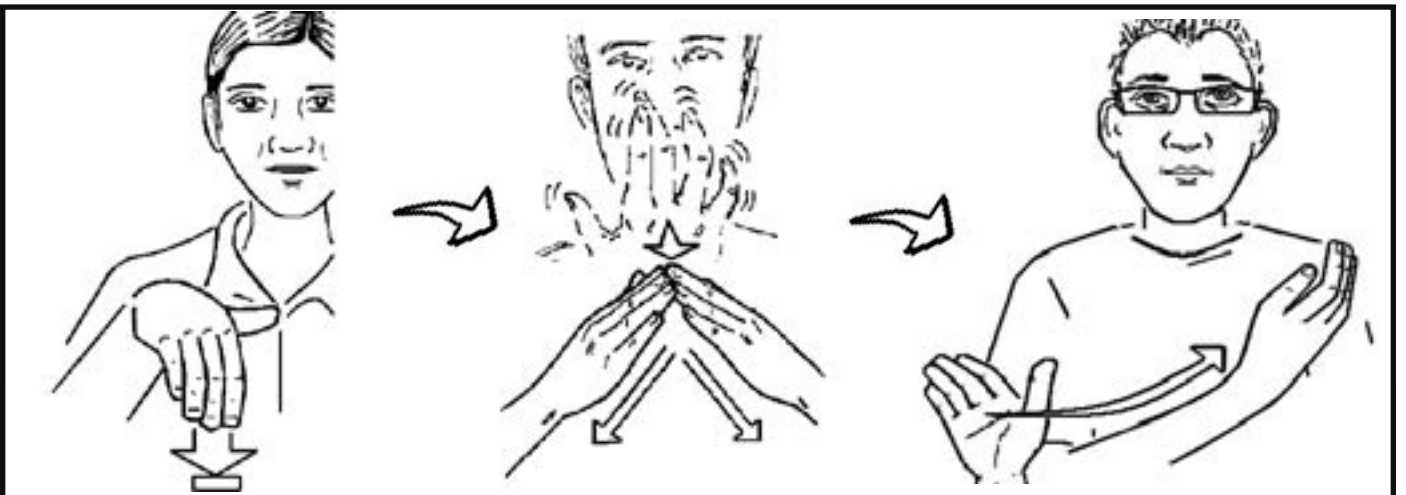
දෙසැම්බර්
December



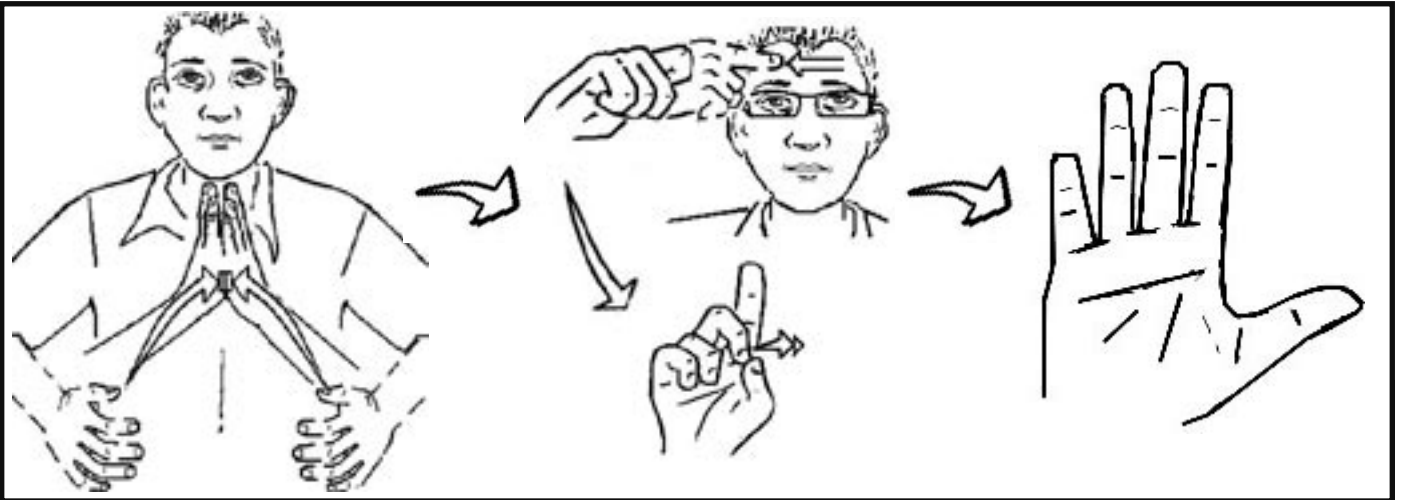
අවුරුදු
Sinhala & Tamil New Year



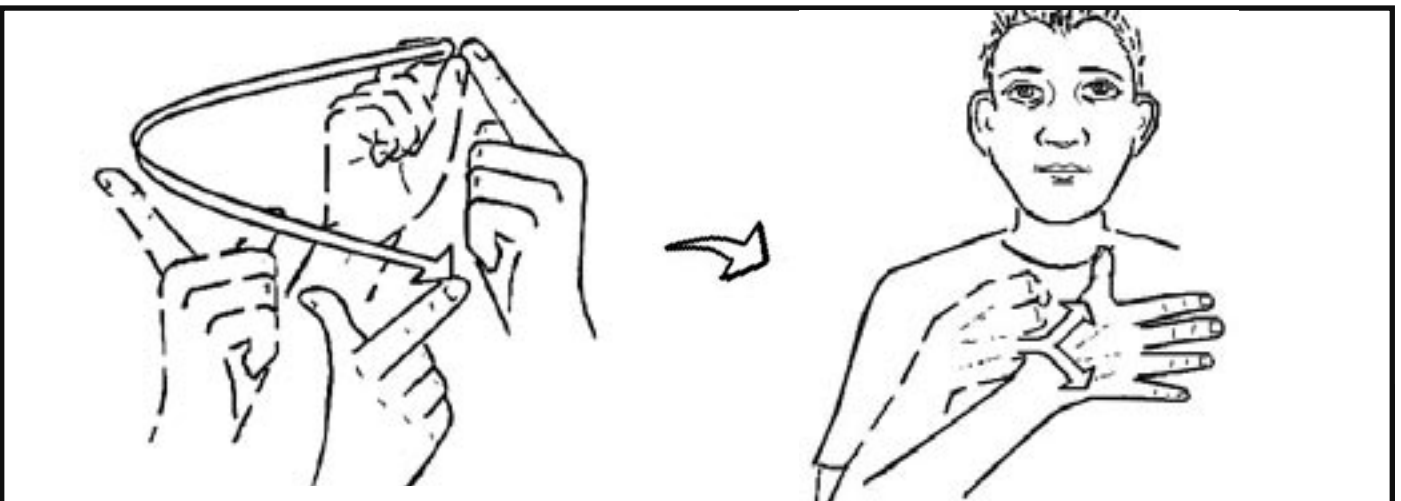
වෙසක්
Wesak



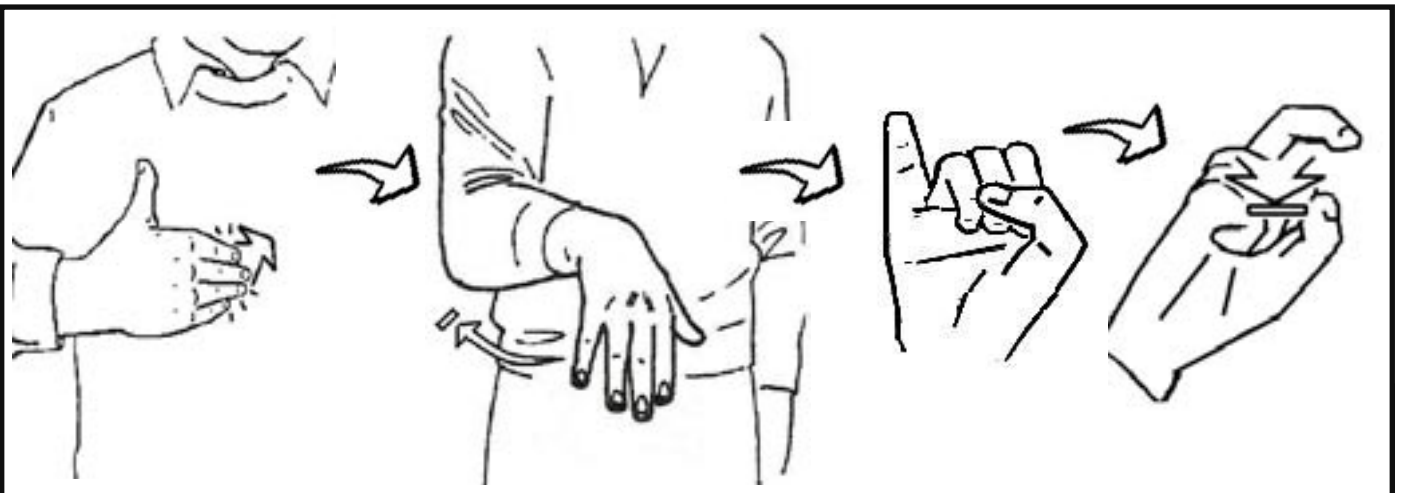
ඔබ අද පාසැල් යනවාද?
Are you going to school today?



මගේ උපන් දිනය දෙසැම්බර් 05 වැනිදා.
My birthday is on 05 December.



පෝය දවස කවදාද?
When is poya day?



මම හයහමාරට එන්නම්.
I will come at half past six (6:30).