

This is a section from *An Introduction to Sri Lankan Sign Language* (2007).

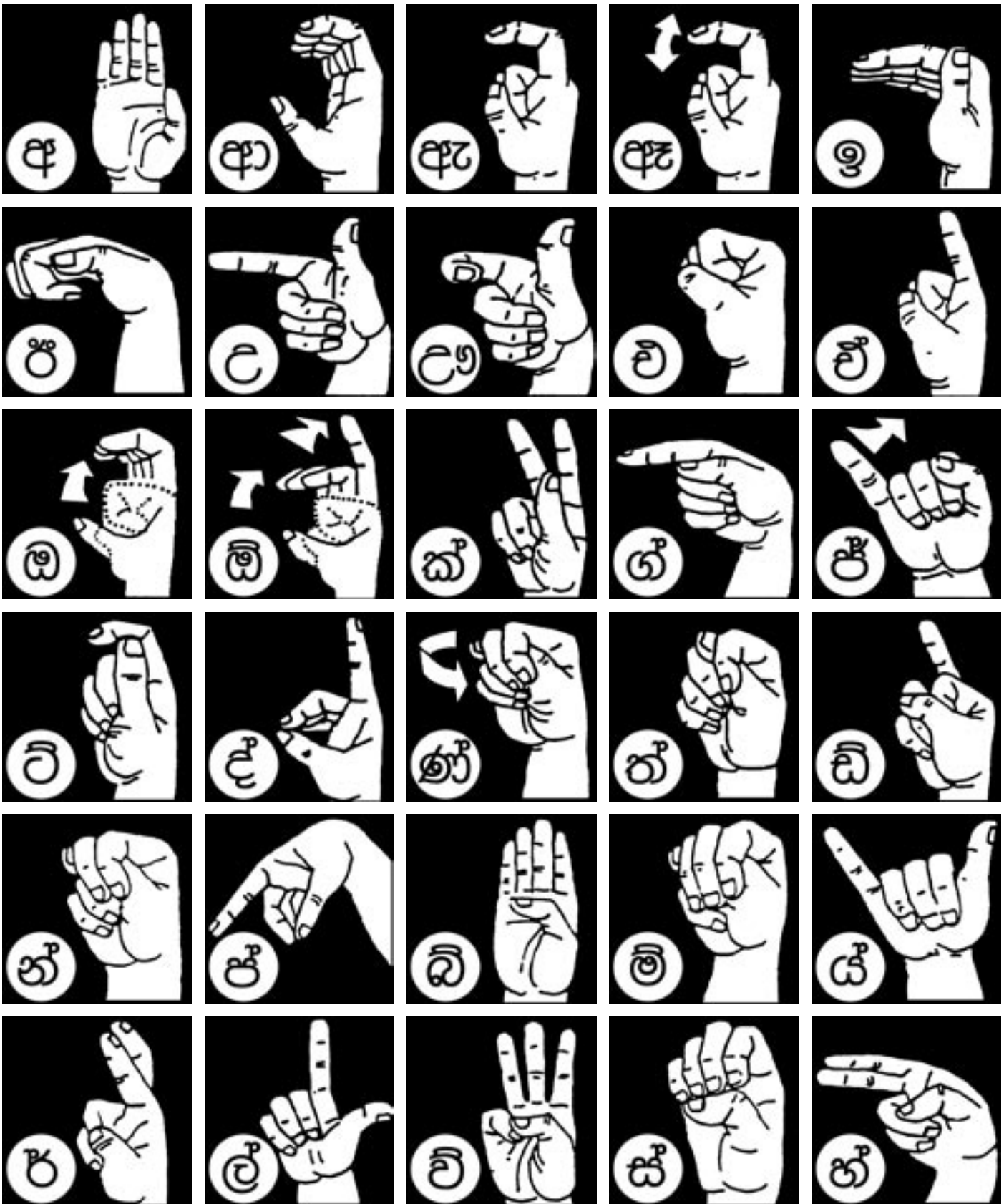
For more information, please go to
www.rohanaspecialschool.org.

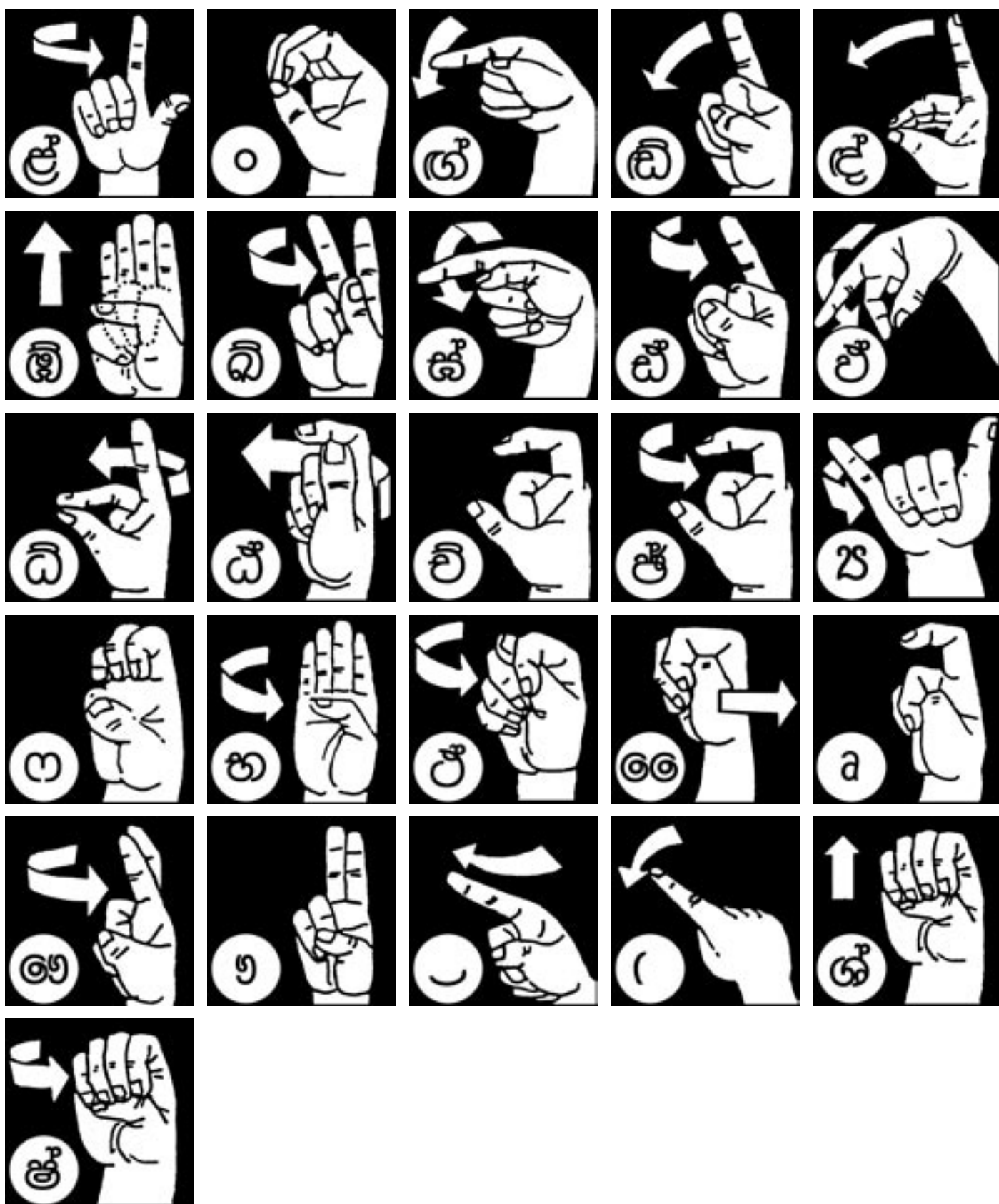
හෝඩය Alphabets

අ
ආ
ඇ
ඈ
ඉ
ඊ
උ
ඌ
ඍ
ඎ
ඏ
ඐ
එ
ඒ
ඓ
ඔ
ඕ
ඖ
඗
඘
඙
ක
ඛ
ඛ
ඝ
ඞ
ඟ
ච
ඡ
ජ
ඣ
ඤ
ඦ
ට
ඨ
ඩ
ඪ
ණ
ඬ
ත
ථ
ඵ
බ
භ
ඹ
ය
ර
඼
ල
඿
ෆ
෇
෈
෉
්
෋
෌
෍
෎
ා
ැ
ෑ
ි
ී
ු
෕
ූ
෗
ෘ
ෙ
ේ
ෛ
ෞ
ෟ
෠
෡
෢
෣
෤
෥
෦
෧
෨
෩
෪
෫
෬
෭
෮
෯
෰
෱
ෲ
ෳ
෴
෵
෶
෷
෸
෹
෺
෻
෼
෽
෾
෿
෰
෱
ෲ
ෳ
෴
෵
෶
෷
෸
෹
෺
෻
෼
෽
෾
෿

ල
ඵ
බ
භ
ඹ
ය
ර
඼
ල
඿
ෆ
෇
෈
෉
්
෋
෌
෍
෎
ා
ැ
ෑ
ි
ී
ු
෕
ූ
෗
ෘ
ෙ
ේ
ෛ
ෞ
ෟ
෠
෡
෢
෣
෤
෥
෦
෧
෨
෩
෪
෫
෬
෭
෮
෯
෰
෱
ෲ
ෳ
෴
෵
෶
෷
෸
෹
෺
෻
෼
෽
෾
෿

A
B
C
D
E
F
G
H
I
J
K
L
M
N
O
P
Q
R
S
T
U
V
W
X
Y
Z







ආයුබෝවන
Ayubowan



ගෙදර
House



ශ්‍රී ලංකා
Sri Lanka



මාතර
Matara



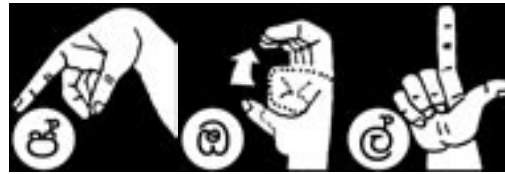
බිහිරි
Deaf



අම්මා
Mother



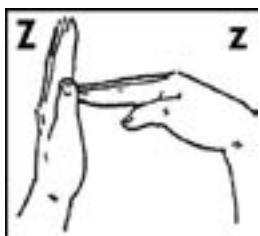
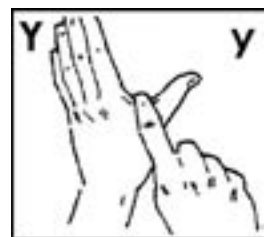
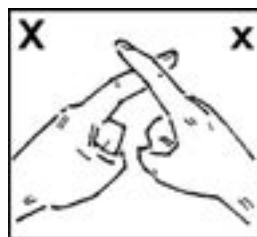
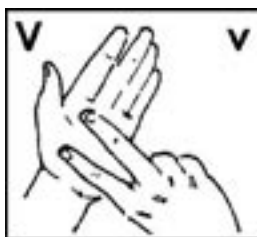
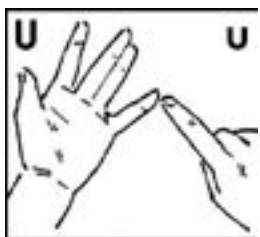
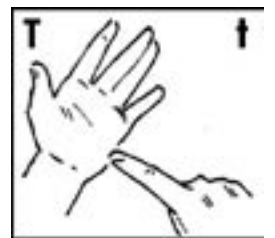
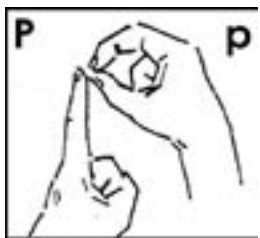
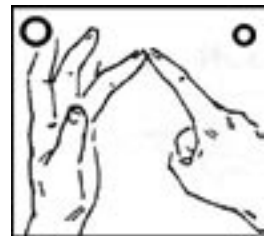
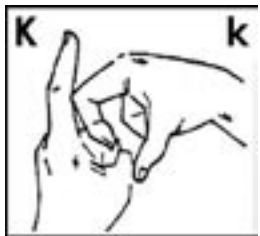
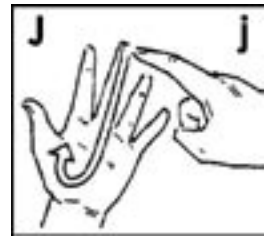
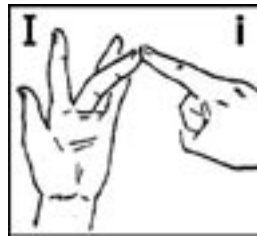
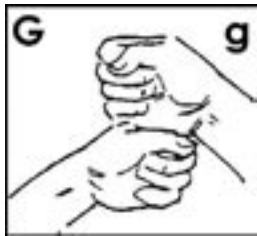
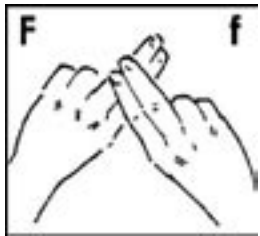
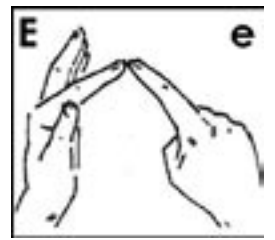
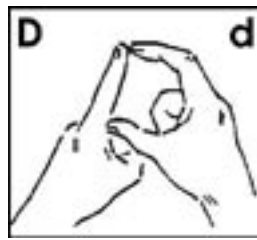
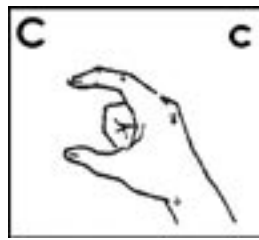
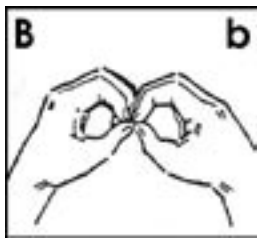
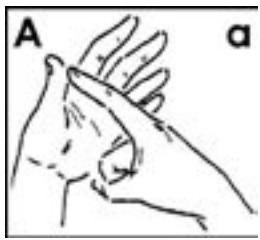
අද
Today



පොල්
Coconut

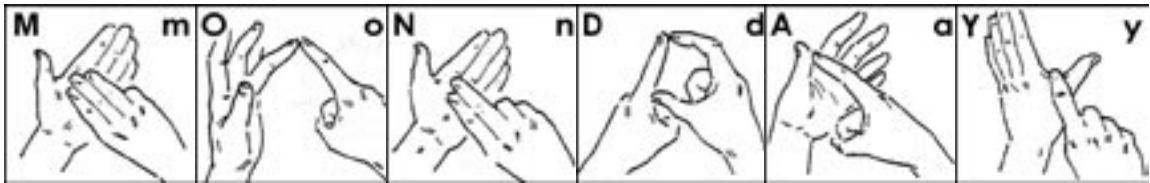


දැල්පාන්දු
Volleyball





ඉංග්‍රීසි
English



සඳුදා
Monday



පාසල
School