

This is a section from *An Introduction to Sri Lankan Sign Language* (2007).

For more information, please go to
www.rohanaspecialschool.org.

දේශගුණය සහ සොබාදහම

Weather and Nature

ඉර
කොළ
ගල
ගස
තණ කොළ
මල
මුහුද
වතුර
වැලි
වැස්ස

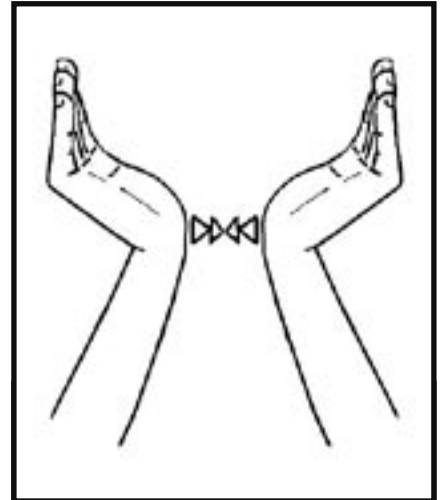
Dirt
Flower
Grass
Leaf
Ocean
Rain
Rock
Sand
Sun
Tree
Water



ඉර
Sun



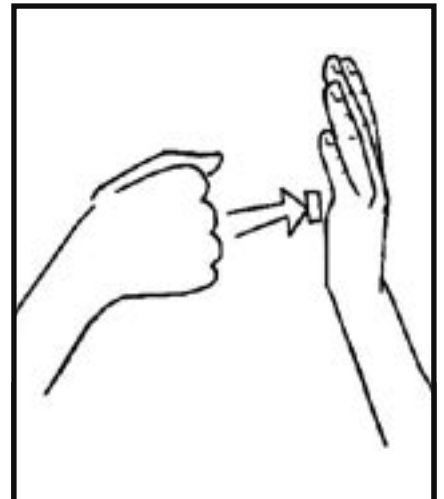
වැස්ස
Rain



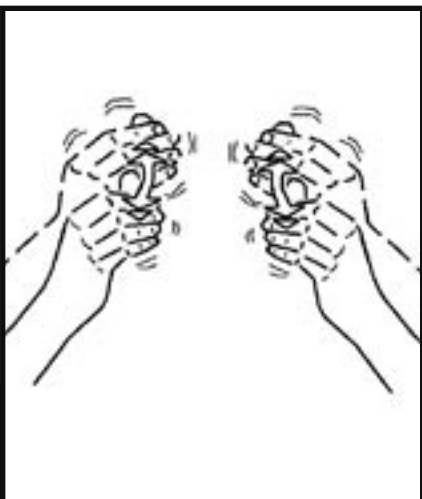
ගස
Tree



මල
Flower



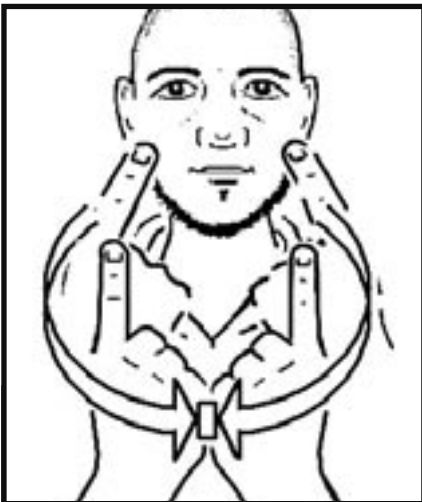
ගල
Rock



වැලි
Dirt/Sand



කොළ
Leaf



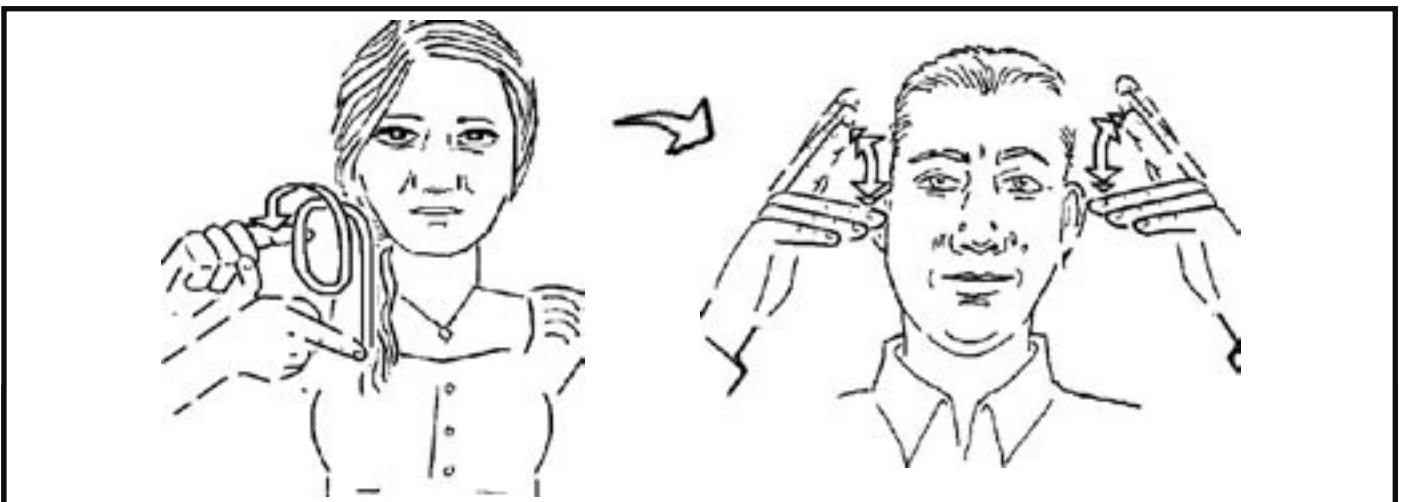
තණ කොළ
Grass



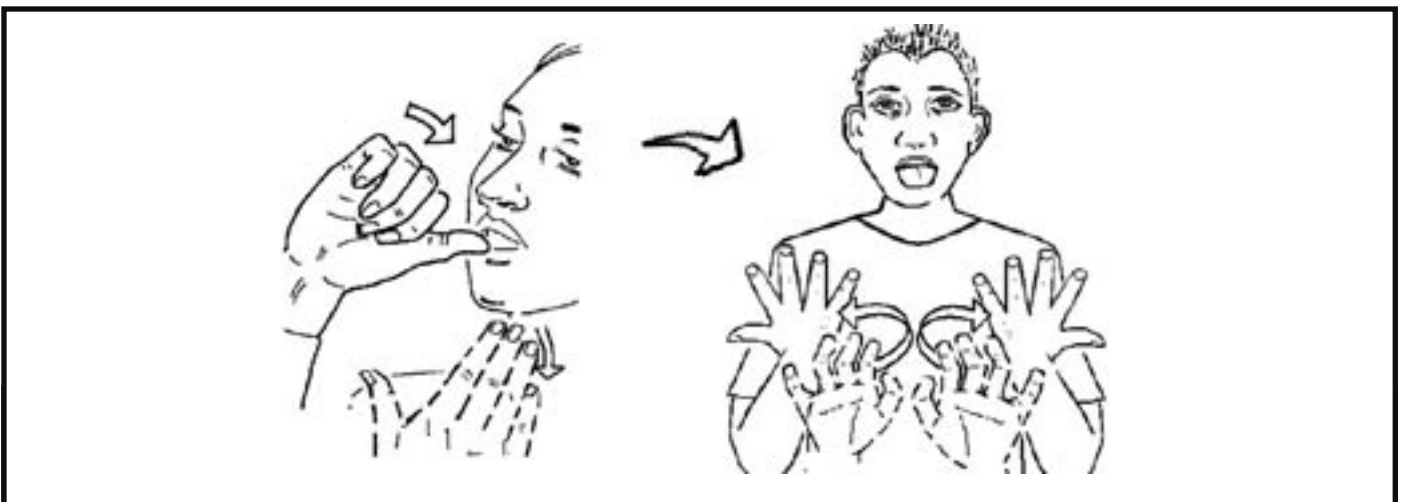
මුහුද
Ocean



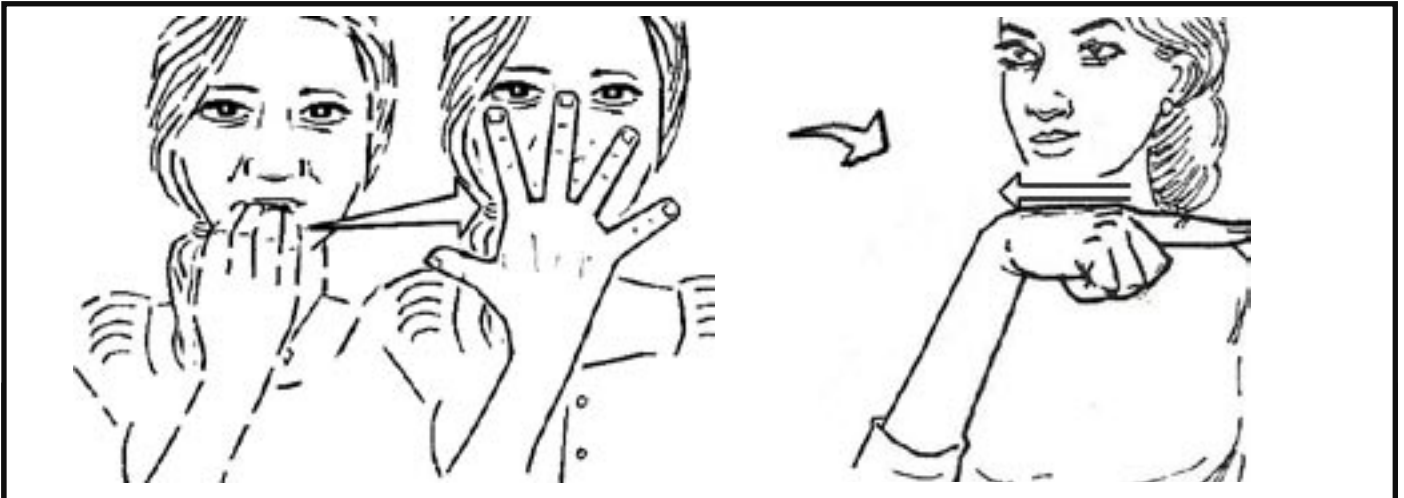
වතුර
Water



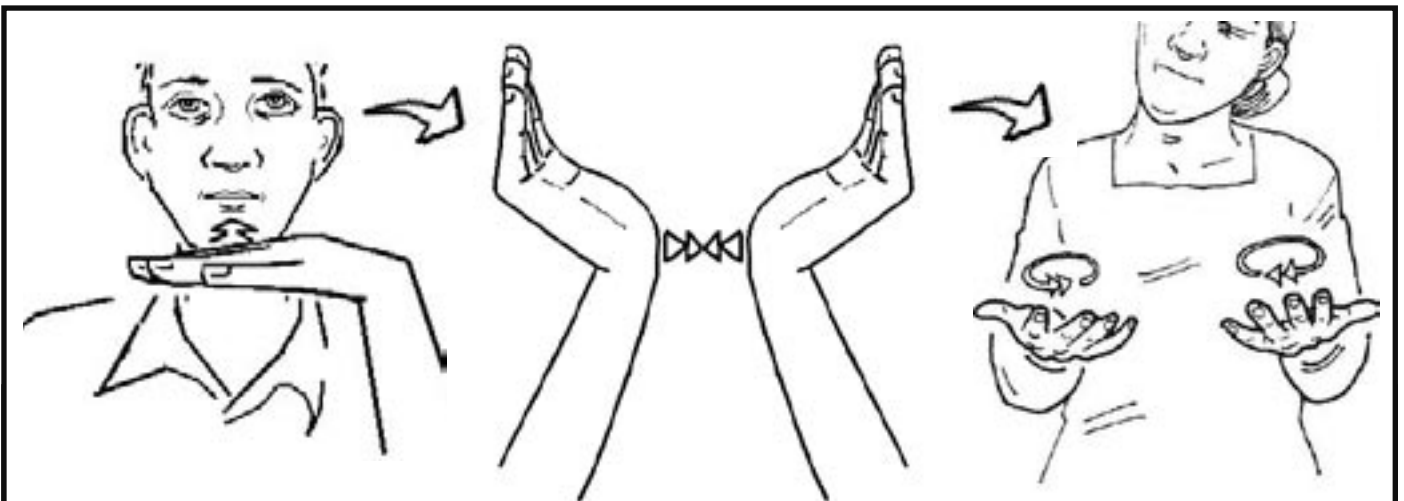
ඊයේ වැස්සා.
It rained yesterday.



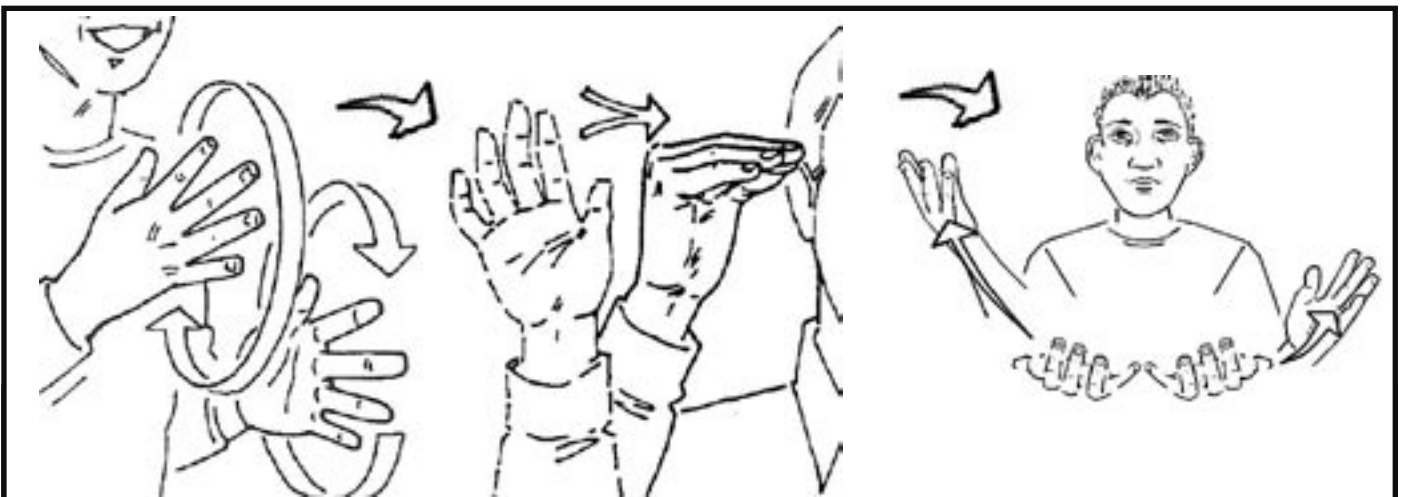
වතුර නැහැ.
There is no water.



මම රතු පාටයි.
The flower is red.



අඹ ගස කොහෙද?
Where is the mango tree?



මම සංඥා භාෂාව ගොඩක් ඉගෙන ගත්තා.
I've learned a lot of Sign Language!