

This is a section from *An Introduction to Sri Lankan Sign Language* (2007).

For more information, please go to
www.rohanaspecialschool.org.

පවුල සහ මිනිස්සු

Family and People

අක්කා	Baby
අම්මා	Birthday
අයියා	Boy
ආච්චි	Brother, Older
උපන්දිනය	Brother, Younger
ගැහැණු	Child
දුව	Children
තාත්තා	Daughter
නංගී	Father
පිරිමි	Female
පුතා	Friend
පුද්ගලයා	Girl
බබා	Grandfather
බිරිඳ	Grandmother
මල්ලී	Husband
මිනිස්සු	Male
යාළුවා	Man
විවාහක	Marry
සැමියා	Mother
සීයා	People
ලමයා	Person
ලමයි	Sister, Older
	Sister, Younger
	Son
	Wife
	Woman



පිරිමි
Man/Boy/Male



ගැහැණු
Woman/Girl/Female



තාත්තා
Father



අම්මා
Mother



පුතා
Son



දුව
Daughter



අයිසා
Older Brother



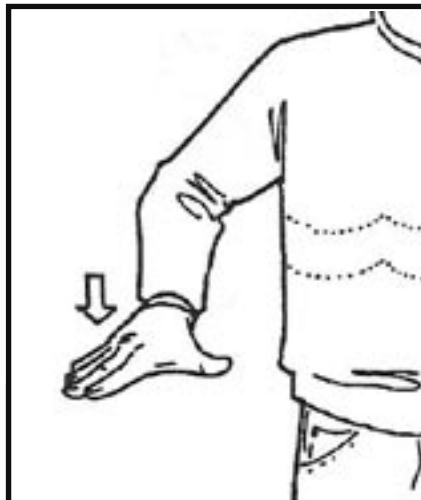
මල්ලි
Younger Brother



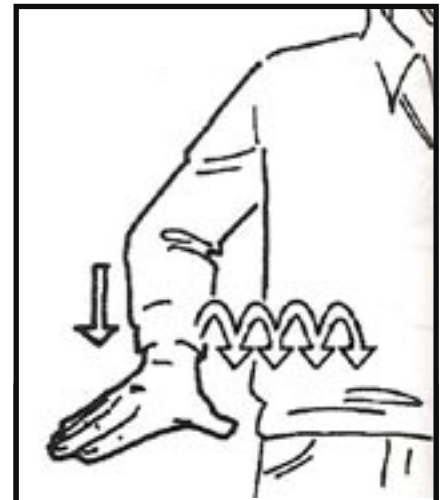
අක්කා
Older Sister



නංඪී
Younger Sister



ලමයා
Child



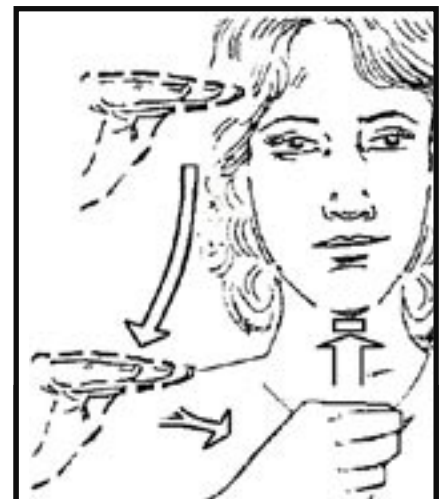
ලමයි
Children



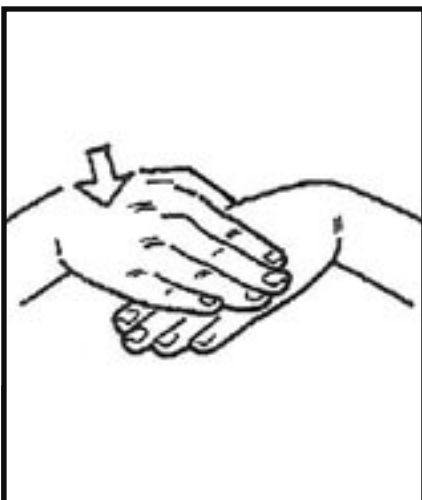
බබා
Baby



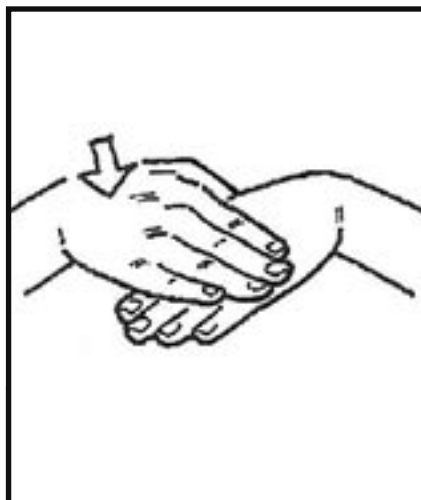
සීයා
Grandfather



ආච්චී
Grandmother



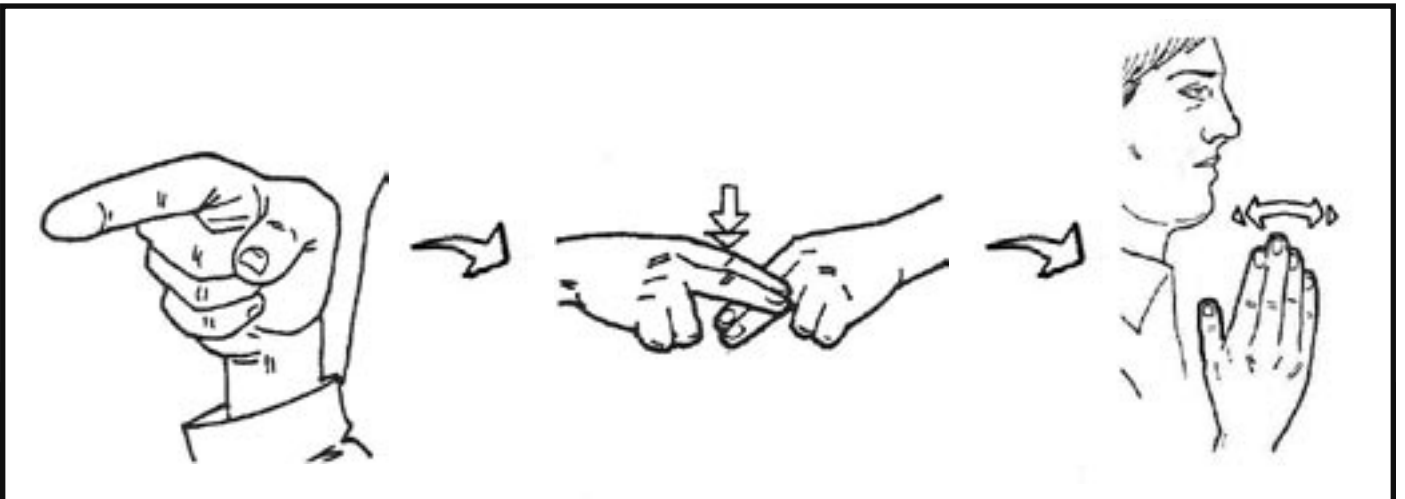
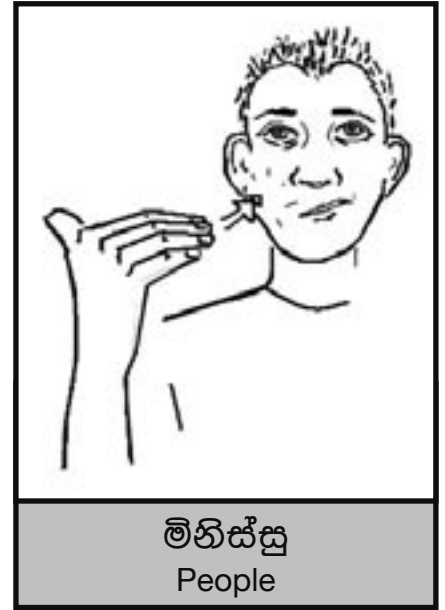
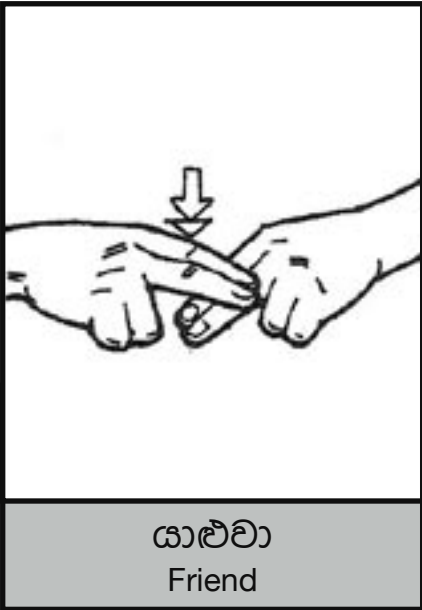
සැමියා/බිරිඳ
Husband/Wife



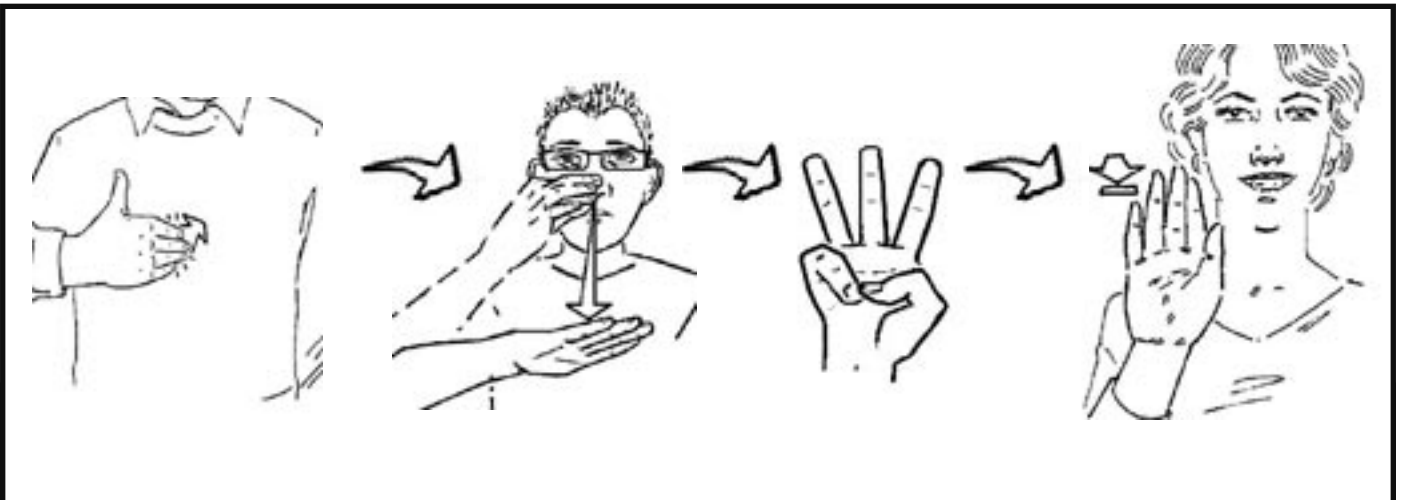
විවාහක
Marry



උපන්දිනය
Birthday



ඔබගේ යහලුවන් කවුරුන්ද?
Who are your friends?



මට මල්ලිලා තුන්දෙනෙක් ඉන්නවා.
I have three younger brothers.