

This is a section from *An Introduction to Sri Lankan Sign Language* (2007).

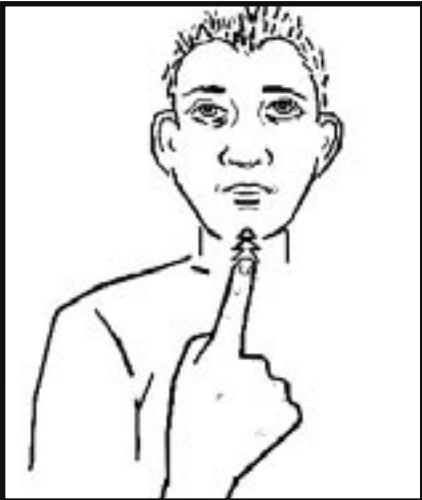
For more information, please go to
www.rohanaspecialschool.org.

මූලික සන්නිවේදනය

Basic Communication

අලුත්
අපිරිසිදු
අමාරු
අත්ත
ඔව්
ඔබ
කැන
ගොඩක්
නරක
නැහැ
බිහිර
බොරු
පිරිසිදු
පරිවර්ථනය
මම
මුදල්
ලස්සන
ලේසි
වයසයි
විකක්
වෙනස්
වේගයෙන්
සමහර විට
සමාන
සමාන්‍ය අය
සියලුම දෙනා
සංඥා භාෂාව
හෙමින්
හොඳයි

All
Bad
Beautiful
Clean
Deaf
Different
Difficult
Dirty
Easy
False
Fast
Few
Good
Hard
Hearing
I
Interpreter
Lie
Many
Maybe
Me
Money
New
No
Old
Same
Sign Language
Slow
Translator
True
Truth
Ugly
Yes
You



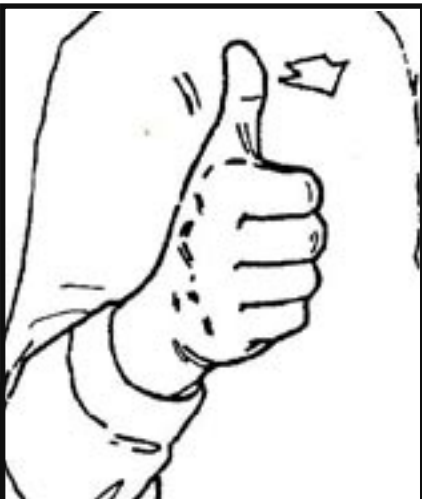
ඔව්
Yes



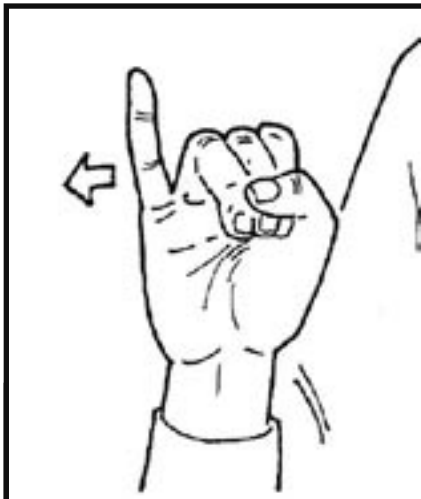
නැහැ
No



සමහර විට
Maybe



හොඳයි
Good



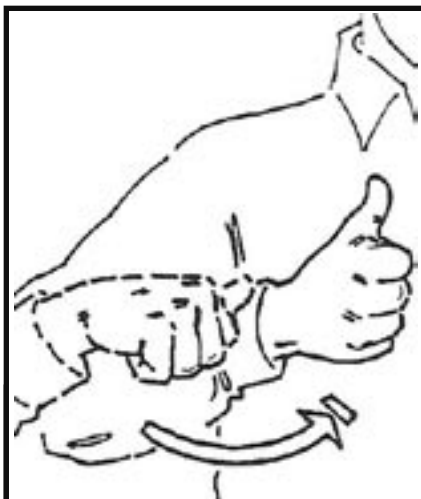
නරක
Bad



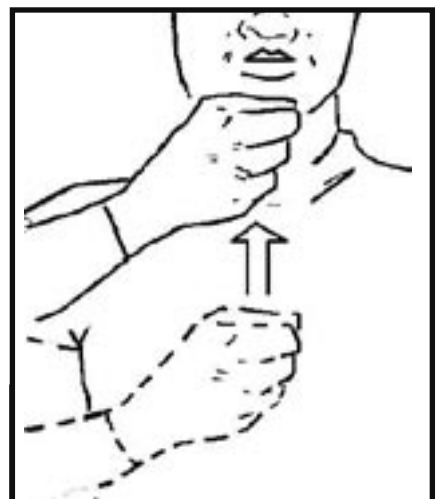
ලේසි
Easy



අමාරු
Hard/Difficult



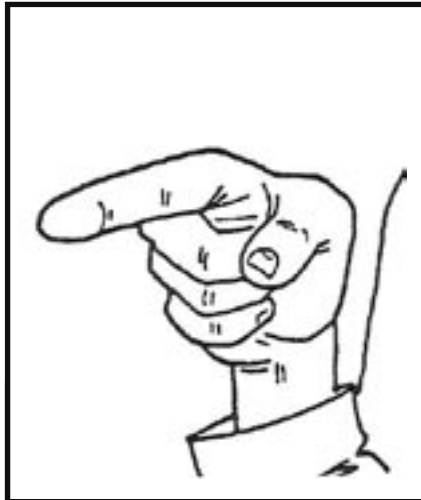
අලුත්
New



වයසයි
Old



මම
I/Me



ඔබ
You



සිංඤා භාෂාව
Sign Language



බිහිර
Deaf



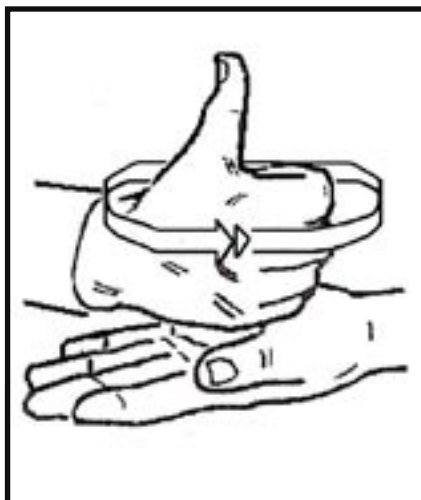
සමාන්‍ය අය
Hearing



පරිවර්ථනය
Translator/Interpreter



අපිරිසිදු
Dirty



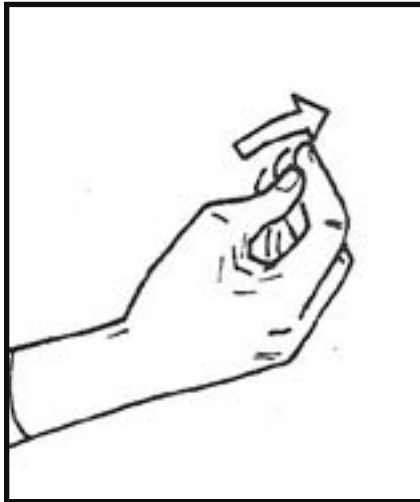
පිරිසිදු
Clean



ලස්සන
Beautiful



කැත
Ugly



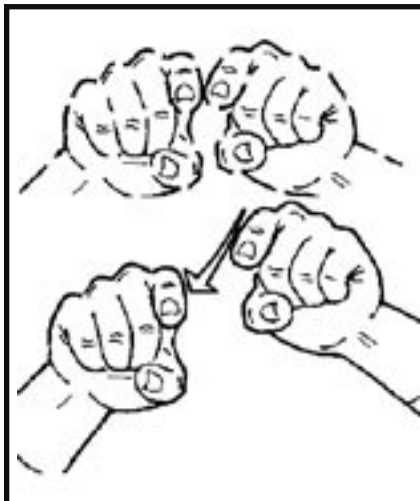
මුදල්
Money



ආත්ත
True/Truth



බොර
Lie/False



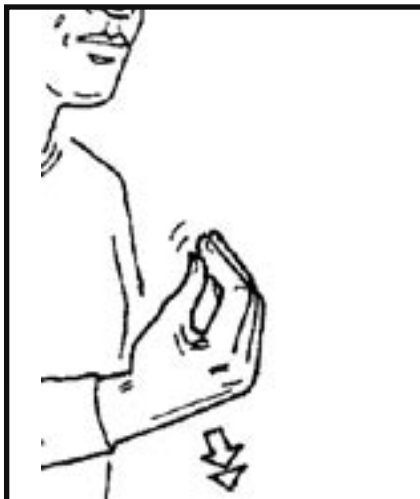
සමාන
Same



වෙනස්
Different



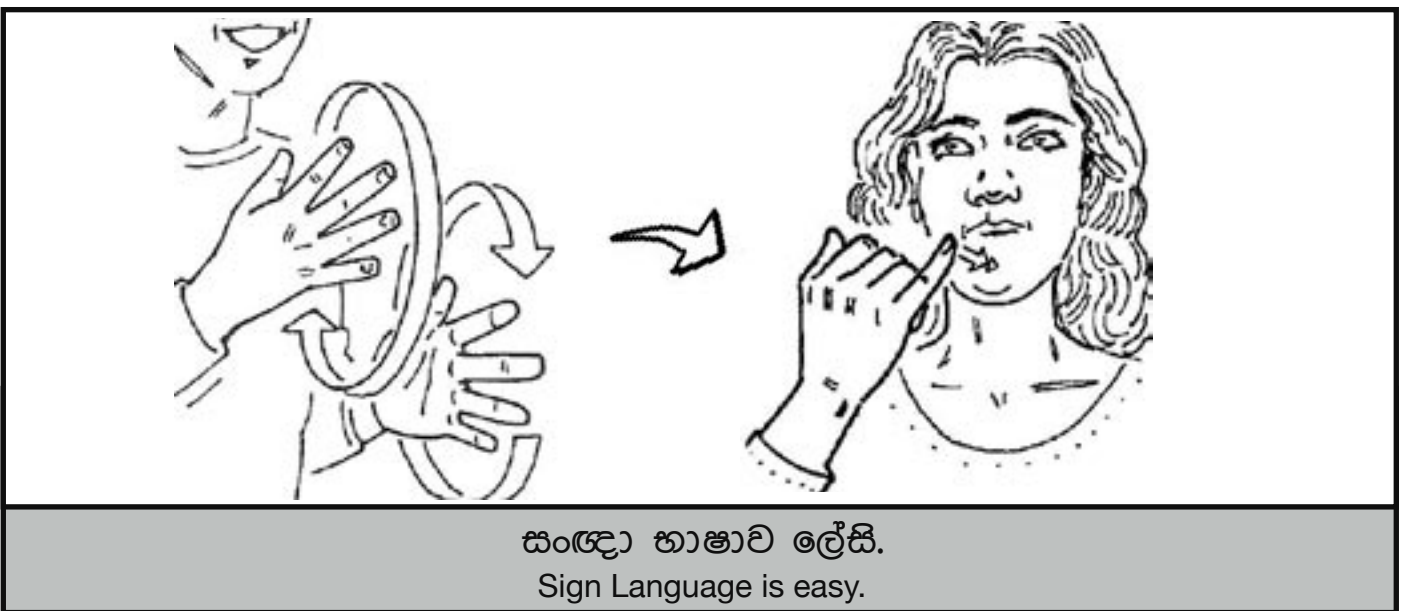
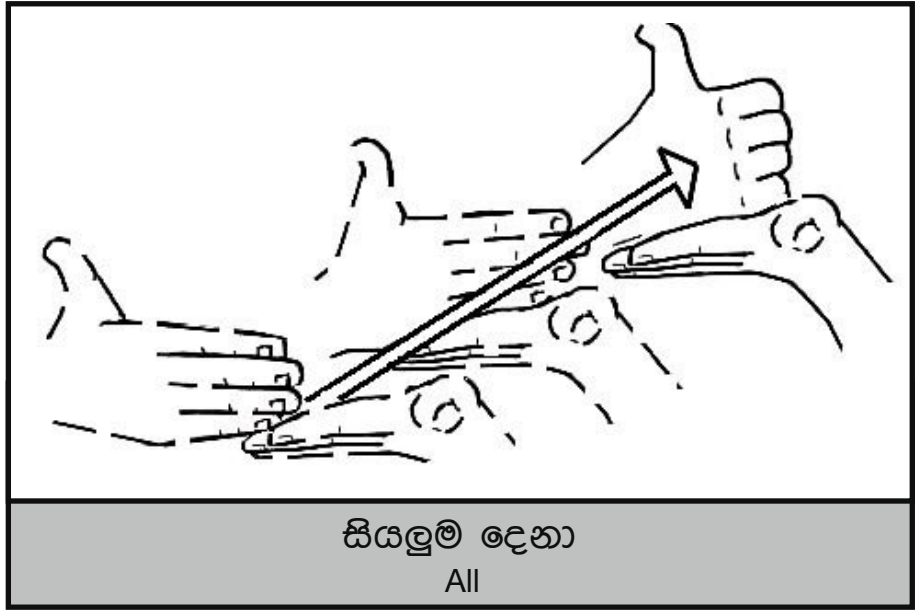
වේගයෙන්
Fast

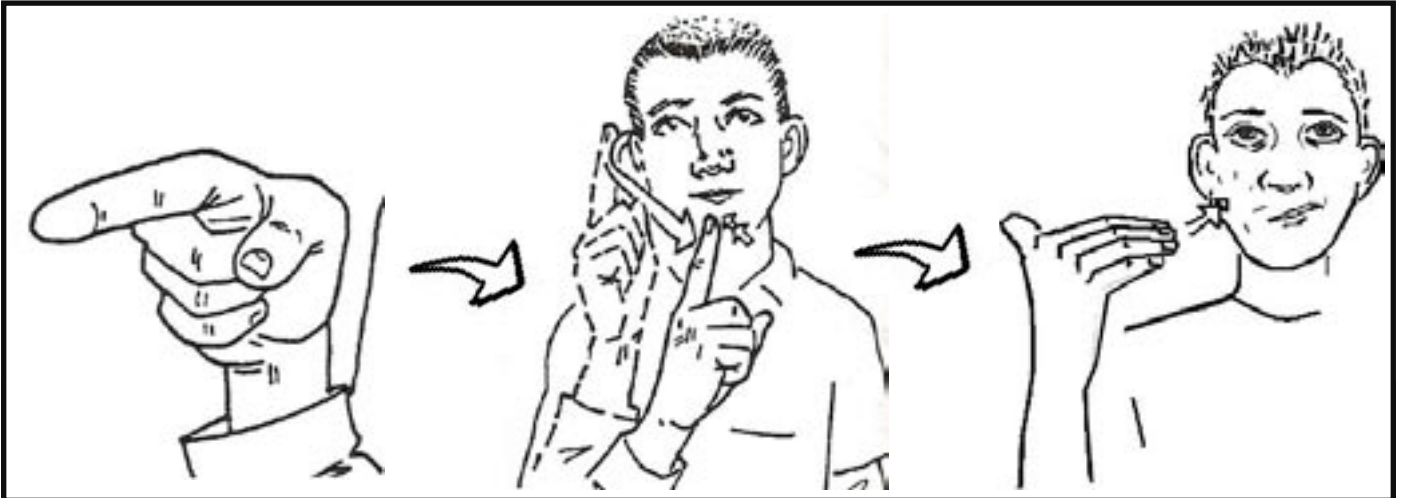


හෙමින්
Slow

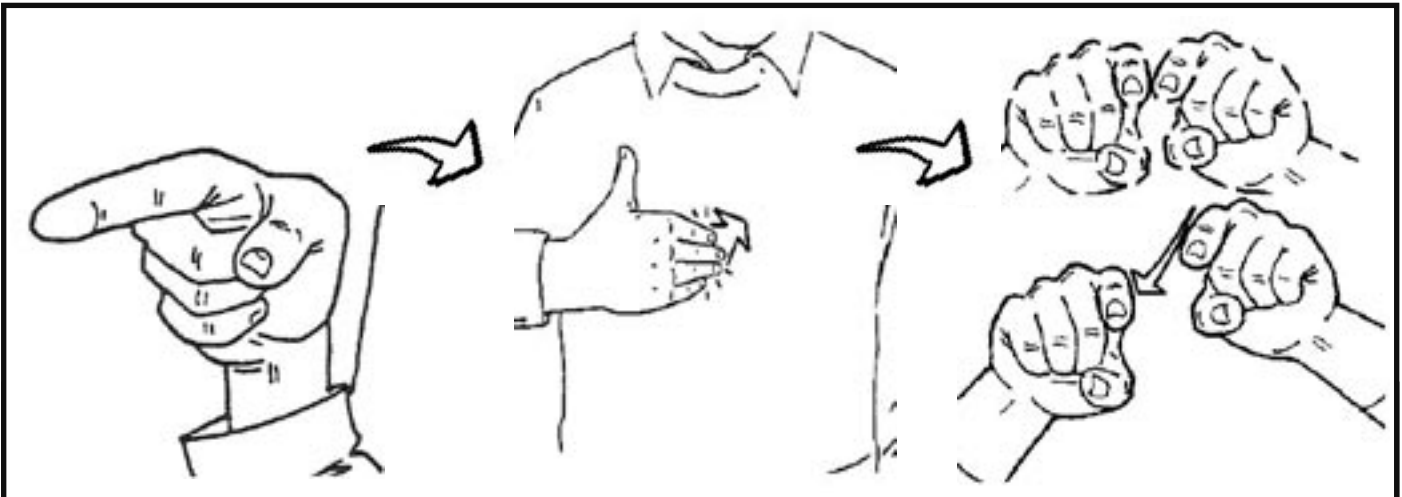


ගොඩක්
Many





ඔයා බිහිරිද නැත්නම් ඇසෙනවාද?
Are you deaf or hearing?



අපි දෙන්නම සමානයි.
You and I are the same.



මම ඇත්ත කියමි.
I am being truthful.